



EXTERNAL BATTERY PACKS

EXTERNAL BATTERY TRAVEL SERIES

Model EL1697 Max. 27000 mAh
IATA inflight in board (Non DG)

Specifications

Model	EL1697
Input	DC12V-24V
Output	1 16V=4A /
	19V=3.5A /
	24V=2.5A
	2 5V=1A
3	5V=2.1A
	10.8V=5A
Size	177 x 110 x 23 mm
Capacity	27000 mAh
Cell	Panasonic NCR18650A x 9



4 Colors : Pink, Green, Blue & Gray

Package Includes



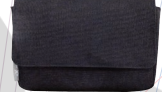
Connectors for Laptop



Connectors for Mobile Phone



AC Adapter (19V / 45W)



Travel Bag

EXTERNAL BATTERY PROFESSIONAL SERIES

Model EL1901 Max. 63000 mAh

Specifications

Model	EL1901
Rated Input	DC 12-19V
Selectable Output	DC 16V or 19V 4.75A Max.
USB Output	DC 5V / 2A
Size	270 x 145 x 33 mm
Capacity	63000 mAh
Cell	Panasonic NCR18650GA x 18



Designed for
Laptop Computers



E-BIKE BATTERY PACKS

* Our e-bike battery packs are in compliance with EN15194
* ULV0 standard materials are used for our battery packs

WATER BOTTLE BATTERY PACKS



Voltage: 24V, 36V & 48V
Capacity: 4.4 Ah ~ 14 Ah

MULTI-FIT BATTERY PACKS



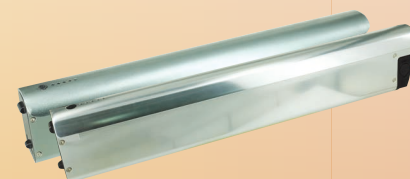
Voltage: 24V, 36V & 48V
Capacity: 6.6 Ah ~ 14.0 Ah

REAR CARRIER BATTERY PACKS



Voltage: 24V, 36V & 48V
Capacity: 6.6 Ah ~ 17.5 Ah

IN-FRAME BATTERY PACKS



Voltage: 24V, 36V & 48V
Capacity: 6.6 Ah ~ 14.0 Ah



BATTERY CELLS - YIK LIK ENERGY



Model: INR18650A260
Chemistry: Li-NMC
Nominal Voltage: 3.6V
Typical Capacity: 2600 mAh
Continuous Current: 6A



Model: INR18650D260
Chemistry: Li-NMC
Nominal Voltage: 3.6V
Typical Capacity: 2600 mAh
Continuous Current: 10A



Model: INR18650D290
Chemistry: Li-NMC
Nominal Voltage: 3.6V
Typical Capacity: 2900 mAh
Continuous Current: 10A



Model: ICR18650A300
Chemistry: Li-NMC
Nominal Voltage: 3.6V
Typical Capacity: 3000 mAh
Continuous Current: 6A



Model: INR18650D300E
Chemistry: Li-NMC
Nominal Voltage: 3.6V
Typical Capacity: 3000 mAh
Continuous Current: 15A



Model: INR18650A340
Chemistry: Li-NMC
Nominal Voltage: 3.6V
Typical Capacity: 3400 mAh
Continuous Current: 6A



Model: INR18650D350
Chemistry: Li-NMC
Nominal Voltage: 3.6V
Typical Capacity: 3500 mAh
Continuous Current: 10A



Model: INR18500A200
Chemistry: Li-NMC
Nominal Voltage: 3.6V
Typical Capacity: 2000 mAh
Continuous Current: 4A



Model: INR18650D150G
Chemistry: Li-NMC
Nominal Voltage: 3.6V
Typical Capacity: 1500 mAh
Continuous Current: 20A



Model: INR18650D200G
Chemistry: Li-NMC
Nominal Voltage: 3.6V
Typical Capacity: 2000 mAh
Continuous Current: 20A



Model: INR18650D250G
Chemistry: Li-NMC
Nominal Voltage: 3.6V
Typical Capacity: 2500 mAh
Continuous Current: 20A



Model: INR18650D300G
Chemistry: Li-NMC
Nominal Voltage: 3.6V
Typical Capacity: 3000 mAh
Continuous Current: 20A



PORTAPOWER

www.portapower.com



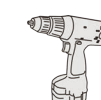
WE PROVIDE



LAPTOP & NETBOOK
BATTERY PACKS



CHARGERS



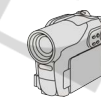
CORDLESS POWER TOOL
BATTERY PACKS



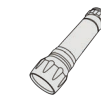
MOBILE & SMARTPHONE
BATTERY PACKS



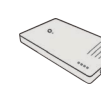
DIGITAL CAMERA
BATTERY PACKS



VIDEO CAMCORDER &
PROFESSIONAL CAMCORDER
BATTERY PACKS



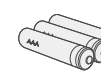
REPLACEMENT LED - FLASHLIGHT
BATTERY PACKS



EXTERNAL
BATTERY PACKS



E-BIKE BATTERY PACKS



BATTERY CELLS - YIK LIK ENERGY

* All brands, trademarks and registered trademarks are the property of their respective holders

* YIK LIK ENERGY (YLE) subsidiary of PortaPower Group

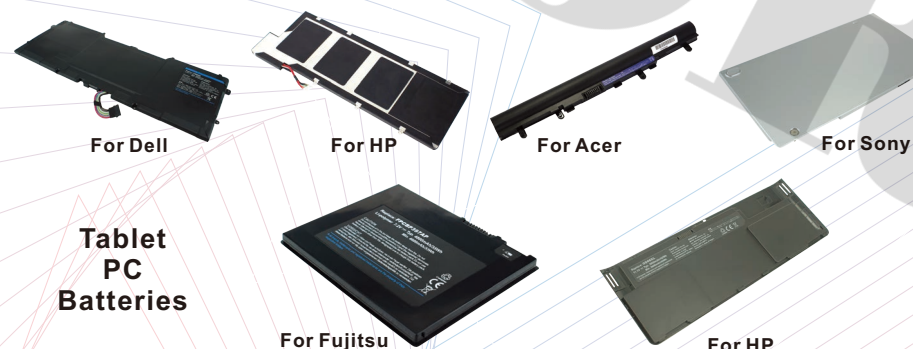


LAPTOP & NETBOOK BATTERY PACKS



We provide choices for a broad range of brands: Acer, Apple, Asus, BenQ, Dell, LG, Compaq, Fujitsu, Gateway, Sony, Kohjinsha, Lenovo, Samsung, MSI, Panasonic, Toshiba, HP, and IBM, etc.

ULTRABOOK BATTERY PACKS



Tablet PC Batteries

UNIVERSAL LAPTOP AC & DC ADAPTERS



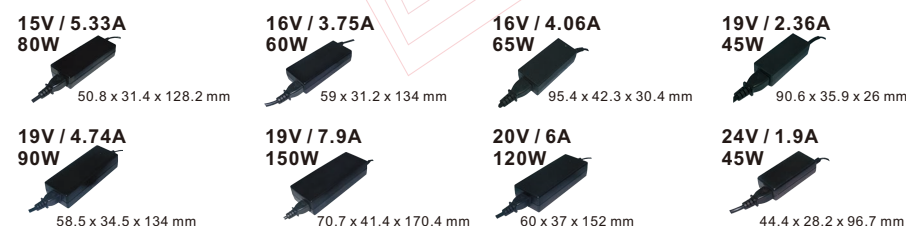
Interchangeable Connector Tips

We provide 38 kinds of tip to choose. Select a suitable connector tip and fit into the laptop DC-in jack tightly and steadily. Then connect the DC output of the Power Adapter to the connector tip.

Tip for MacBook



UNIVERSAL LAPTOP AC ADAPTERS



UNIVERSAL LAPTOP POWER ADAPTERS



Special Design

- Dual USB Output Ports
- Output I: 5V / 1A Max.
- Output II: 5V / 2.1A Max.
- Can charge 3 devices simultaneously

*All brands, trademarks and registered trademarks are the property of their respective holders



CORDLESS POWER TOOL BATTERY PACKS

UNIVERSAL POWER TOOL BATTERY CHARGERS



We provide a broad range of interchangeable charger plates
Over 95% power tool battery charger plates available



Specifications

Model	ACMT & ACMG	ACME
Input	100-240V / 1.2A MAX.	
Output	7.2V - 25V / 3A MAX.	7.2V - 18V / 1.5A MAX.

- * Fit for Ni-Cd/Ni-MH & Li-ion Power Tool Batteries
- * Interchangeable plates to suit different battery models, simply change the charger plates
- * Cover 90% Power Tool battery models

CORDLESS POWER TOOL BATTERIES

We provide compatible power tools battery packs for a wide range of brands available in market: AEG, Black & Decker, Craftsman, DeWalt, Firestorm, Hitachi, Makita, Milwaukee, National, Panasonic, Paslode, Ryobi, and Skil, etc.

Li-Ion Battery Type

Ni-Cd / Ni-MH Battery Type



CORDLESS POWER TOOL BATTERY PACKS

For DYSON - Li-Ion Battery Type



Original Code: DC16
PP Code: TL8016



Original Code: DC57
PP Code: TL8035
Not compatible with the products launched before June 2013

Original Code: DC35
PP Code: TL8034
Not compatible with the products launched after June 2013



For INDREAM



Original Code: DC16
PP Code: TL8016

For IROBOT



Original Code: Roomba 440
PP Code: TB8049G

Original Code: Roomba 510
PP Code: TB8050

*All brands, trademarks and registered trademarks are the property of their respective holders



MOBILE & SMARTPHONE BATTERY PACKS

We provide choices for a wide range of brands: Acer, Asus, BlackBerry, Dell, HP, HTC, LG, Motorola, Nokia, Panasonic, Samsung, Sony Ericsson and Toshiba, etc.



Fit Model: Samsung Galaxy S5
PP Code: BLW0955



Fit Model: Samsung Galaxy Note4
PP Code: BLW0940



Fit Model: Nokia 225
PP Code: BLW1904



DIGITAL CAMERA BATTERY PACKS

We provide choices for a wide range of brands: BenQ, Canon, Casio, Epson, Fujifilm, HP, JVC, Kodak, Leica, Nikon, Olympus, Panasonic, Pentax, Ricoh, Samsung, Sanyo, Sigma, Sony and Toshiba, etc.



For Kodak



For Leica



For Canon



For Sony



VIDEO CAMCORDER BATTERY PACKS

We provide choices for a wide range of brands: Canon, GoPro, Hitachi, JVC, Panasonic, Samsung, Sanyo, Sharp, Sony and Toshiba, etc.



For Sony



For JVC



For Panasonic



PROFESSIONAL CAMCORDER BATTERY PACKS



REPLACEMENT LED - FLASHLIGHT BATTERY DESIGN

Batteries are provided with reliable built-in safety Protection Circuit Modules (PCM) to protect against Over Charge, Over Discharge, Overload and Under Voltage



FL187 3400 mAh
Size: 68 x Ø18.6 mm
Build-in protection circuit

FL197 3400 mAh
Size: 70 x Ø18.6 mm
Build-in protection circuit

New Special Design

Output: 2.2A

Output: 1.5A



FL140 800 mAh
Size: 52.2 x Ø14 mm
Build-in protection circuit

FL160 700 mAh
Size: 35.5 x Ø16.5 mm
Build-in protection circuit

FLU181 750 mAh
Size: 69.8 x Ø18.6 mm
Build-in protection circuit

FLU141 750 mAh
Size: 49.5 x Ø14.2 mm
Build-in protection circuit

*All brands, trademarks and registered trademarks are the property of their respective holders